



Icicle Creek Water Resource Management Strategy

Icicle Workgroup
November 29, 2018

Mike Kaputa

Director
Chelan County Natural Resources

Melissa Downes

Office of Columbia River
WA Dept. of Ecology

Nature of the Programmatic EIS

- Programmatic overview of goals, alternatives, and projects.
- Tailored project level input where information available.
- Supplemental Draft PEIS not being prepared.
- Project-level SEPA review occurs by a permitting agency to determine if additional environmental review appropriate.
- PEIS will serve as a foundation for NEPA review where appropriate.

Projects	Proposed Alternatives					
	No Action Alternative	Alternative 1	Alternative 2	Alternative 3	Alternative 4	Alternative 5
Conservation						
IPID Irrigation Efficiencies	○	●	●	●	●	
COIC Irrigation Efficiencies (Piping)	●	●	●	●	●	●
Domestic Conservation Efficiencies	○	●	●	●	●	●
LNFH Conservation and Water Quality Improvements	●	●	●	●	●	●
Pump Exchange						
IPID Dryden Pump Exchange	○	○	●	●		
Full IPID Pump Station						●
COIC Irrigation Efficiencies (Pump Exchange)	●	●	●	●	●	●
Modification/Restoration of Existing Storage						
Alpine Lakes Reservoir Optimization, Modernization and Automation	○	●			●	●
Eightmile Lake Storage Restoration	○	●	●	○	●	●
New Storage						
Eightmile Lake Storage Enhancement					●	
Upper Klonauqua Lake Storage Enhancement					●	
Upper and Lower Snow Lakes Storage Enhancement					●	
Habitat/Fisheries Improvements						
Tribal Fishery Protection	○	●	●	●	●	●
Habitat Protection and Enhancement	○	●	●	●	●	●
Fish Passage	●	●	●	●	●	●
Fish Screening	●	●	●	●	●	●
Legislative/Administrative Tools						
Water Markets		●	●	●	●	●
Instream Flow Rule Amendment	○	●	●	●	●	●
OCPI legislative fix from instream flow impacts				●		

○ Represents projects that might proceed if funding becomes available. However, under the No-action Alternative, project beneficiaries may be different and project timelines are unknown.

● Represents projects that are likely to occur as described, but could be replaced by another project that fulfills the same guiding principles if a design, funding, or permitting fatal flaw is identified.

Preferred Alternative 1

Summary: 89 cfs and 32K acre-feet of water supply developed, \$82 million dollar estimated cost, climate change resilient, and meets all Guiding Principles, 90% to instream flow

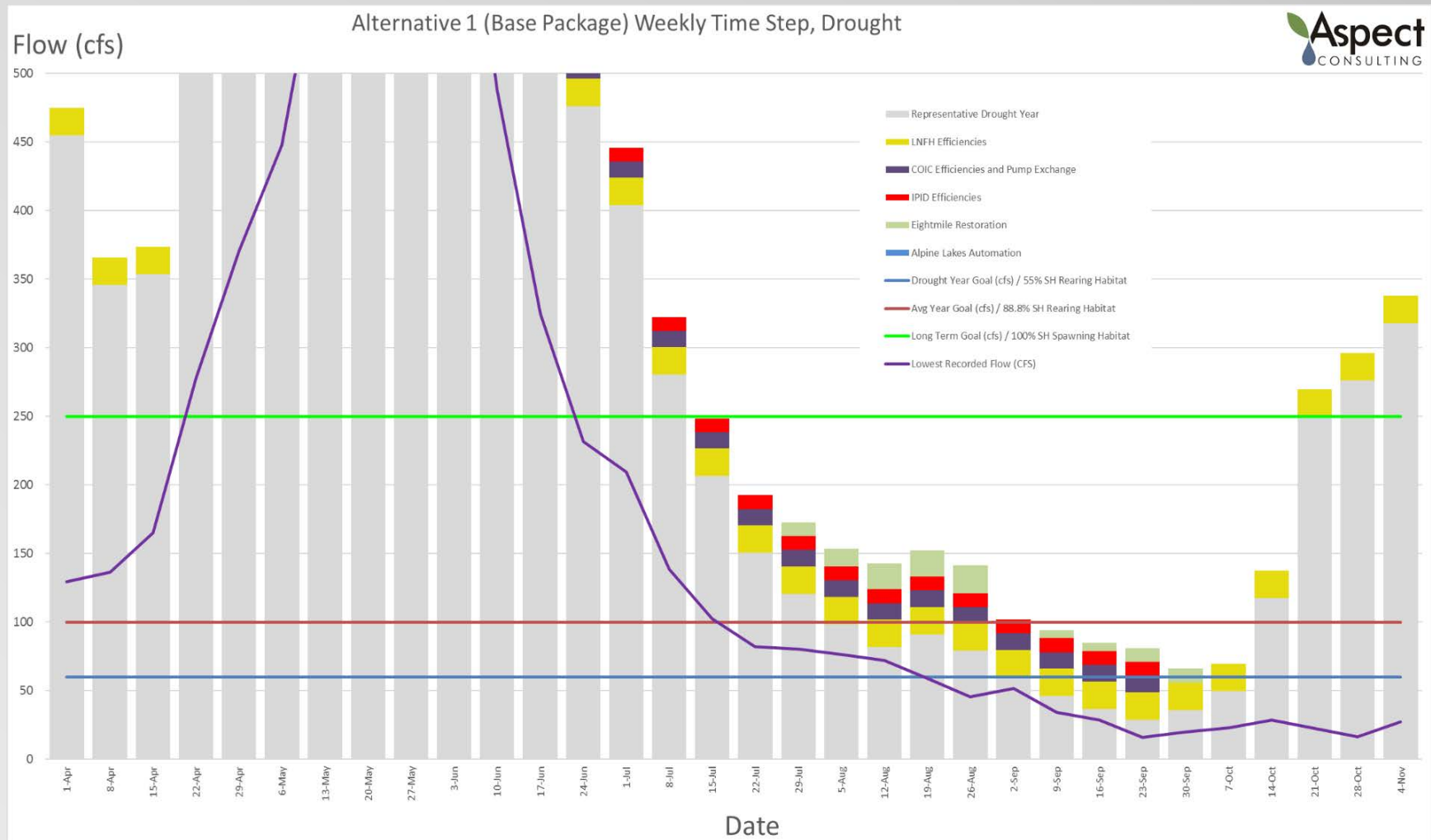
- 10 cfs from IPID conservation
- 11.9 cfs from COIC conservation & pump exchange
- 0.5 cfs from domestic conservation
- 0.4 cfs from instream flow amendment
- 20 cfs from LNFH conservation / reuse Projects
- 30+ cfs from automation / optimization of Alpine Lakes
- 12+ cfs from Eightmile Lake restoration project
- 3.4 cfs from water markets
- Fish screening, habitat, Tribal fishery enhancement

Modifications / Additions to Alternative 1

- City of Leavenworth to exercise new water supplies from Wenatchee river instead of Icicle Creek
- Enhanced conservation including lawn buy-back program included
- Additional cost contingency added to projects with Wilderness overlay
- In-basin land acquisition prioritized if possible as part of habitat mitigation

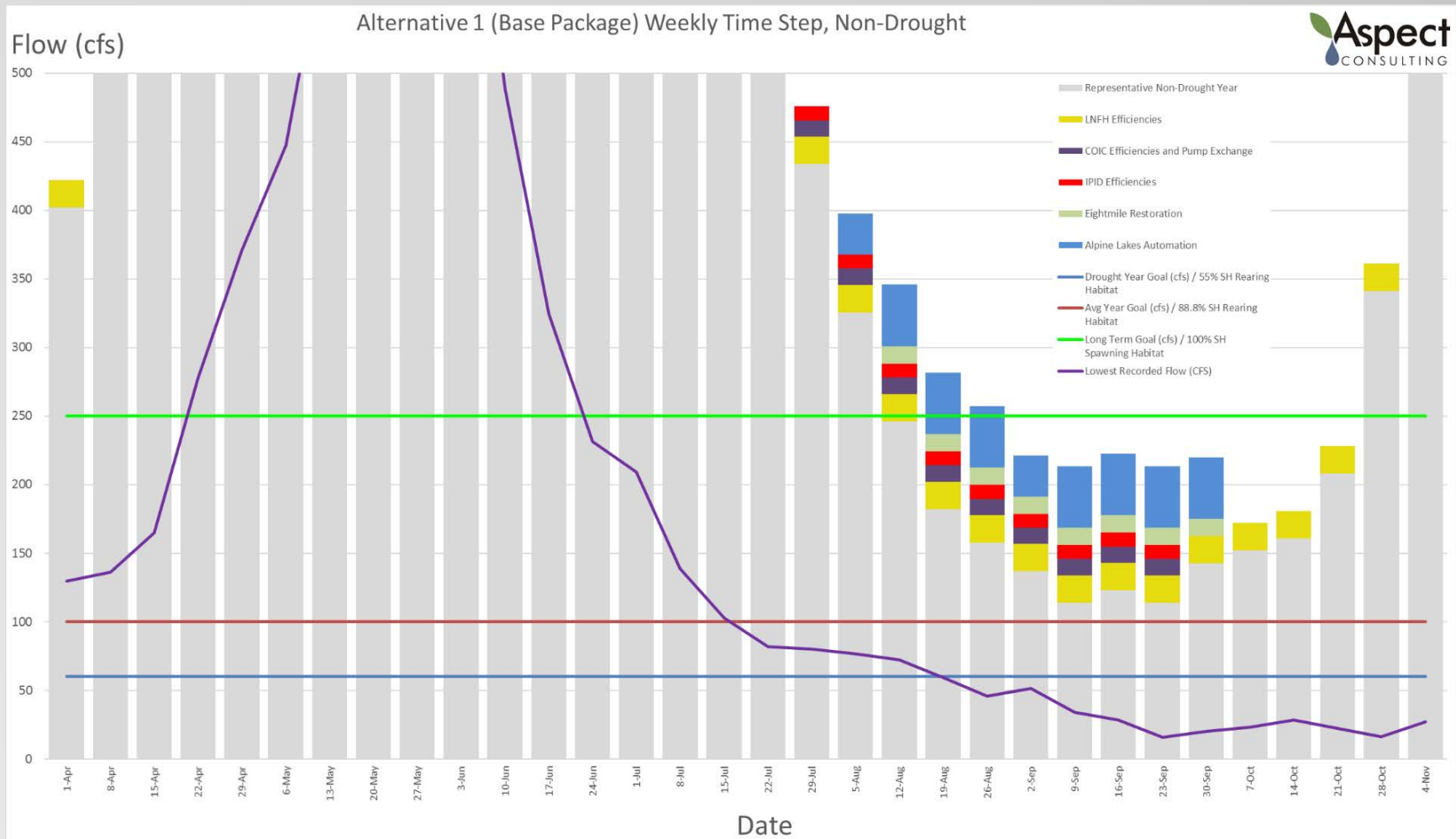
Drought Year Performance of Alt. 1

Summary: Gray bars are average drought flows, purple line is lowest weekly flow of record, straight blue / red lines are Guiding Principle targets, colored bars are water supplies from Alternative 1 project development.

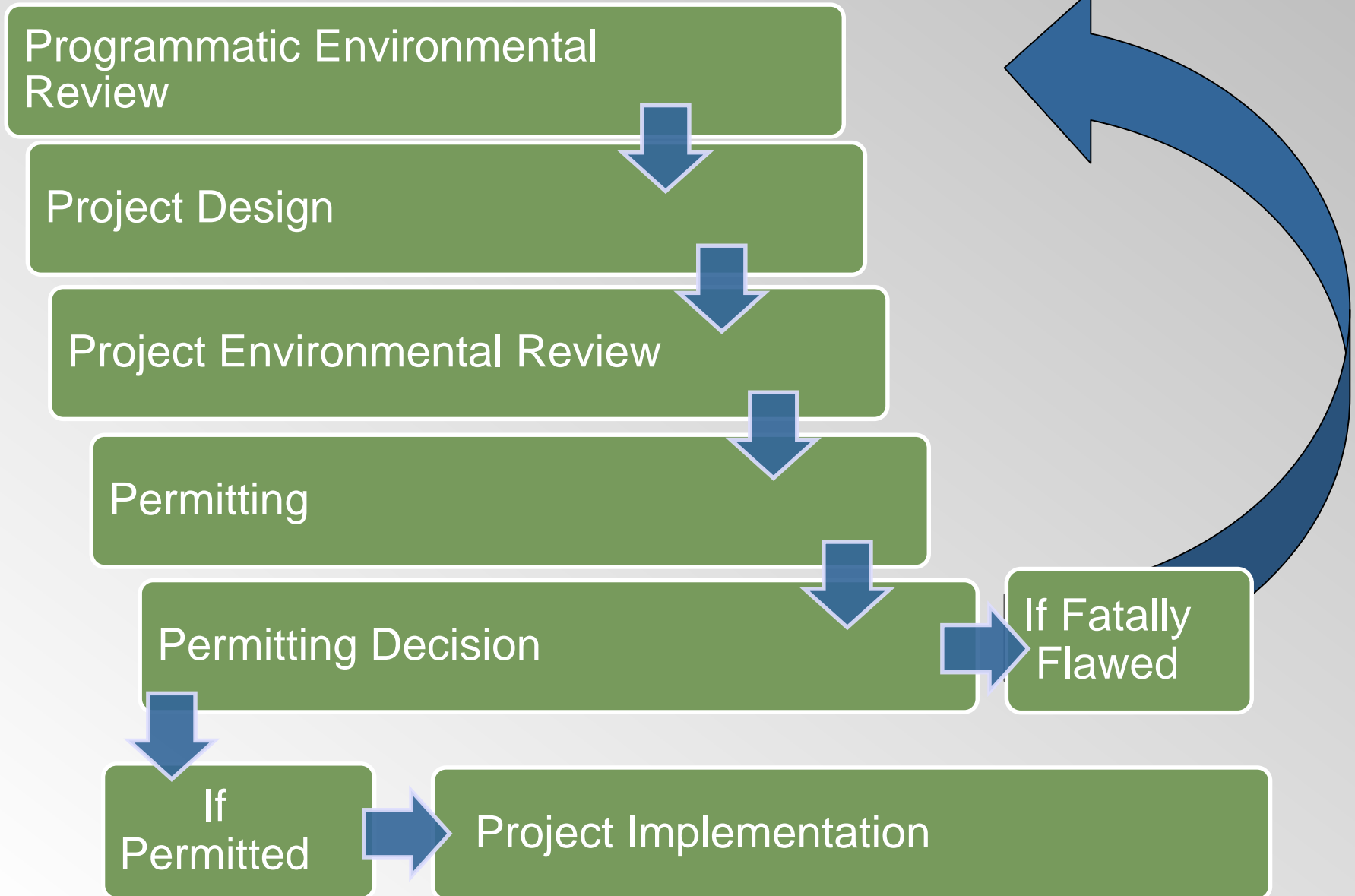


Non-Drought Year Performance of Alt. 1

Summary: Gray bars are average non-drought flows, purple line is lowest weekly flow of record, straight blue / red lines are Guiding Principle targets, colored bars are water supplies from Alternative 1 project development.



Selection of a PEIS Preferred Alternative is Just the Next Step, Not the Last Step





Questions?

Mike Kaputa

Director

Chelan County Natural Resources

Melissa Downes

Office of Columbia River

WA Dept. of Ecology