



Icicle Creek Comprehensive Water Resources Strategy

Workgroup Presentation

Workshop #4

May 17, 2013

Dan Haller, PE



**ICICLE CREEK
TARGET FLOW REPORT
FOR LEAVENWORTH NATIONAL
FISH HATCHERY**

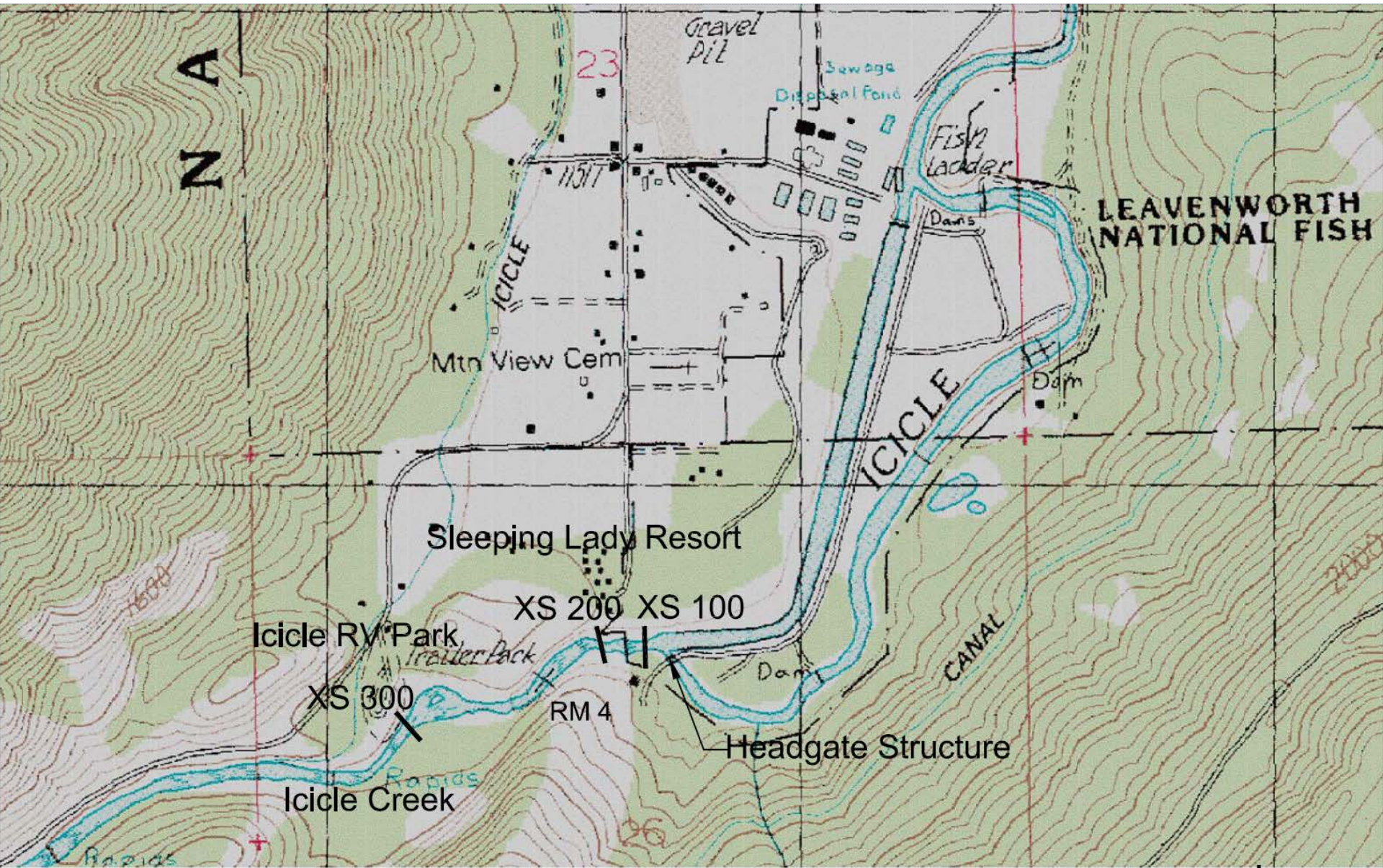


DECEMBER 2004

**PREPARED FOR:
JACOBS CIVIL, INC.**

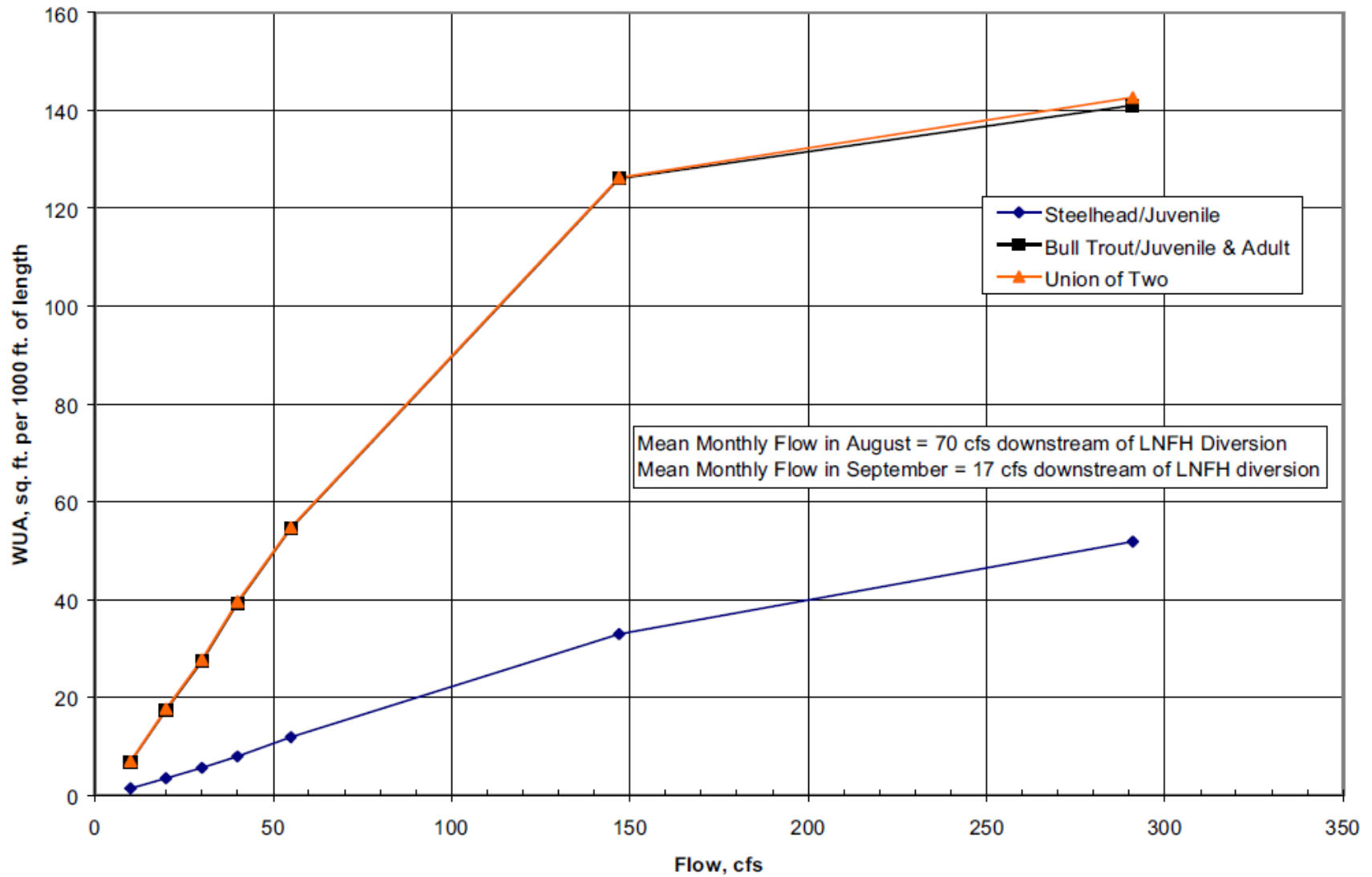
BY:





PHABSIM Results

Icicle Creek below LNFH Diversion

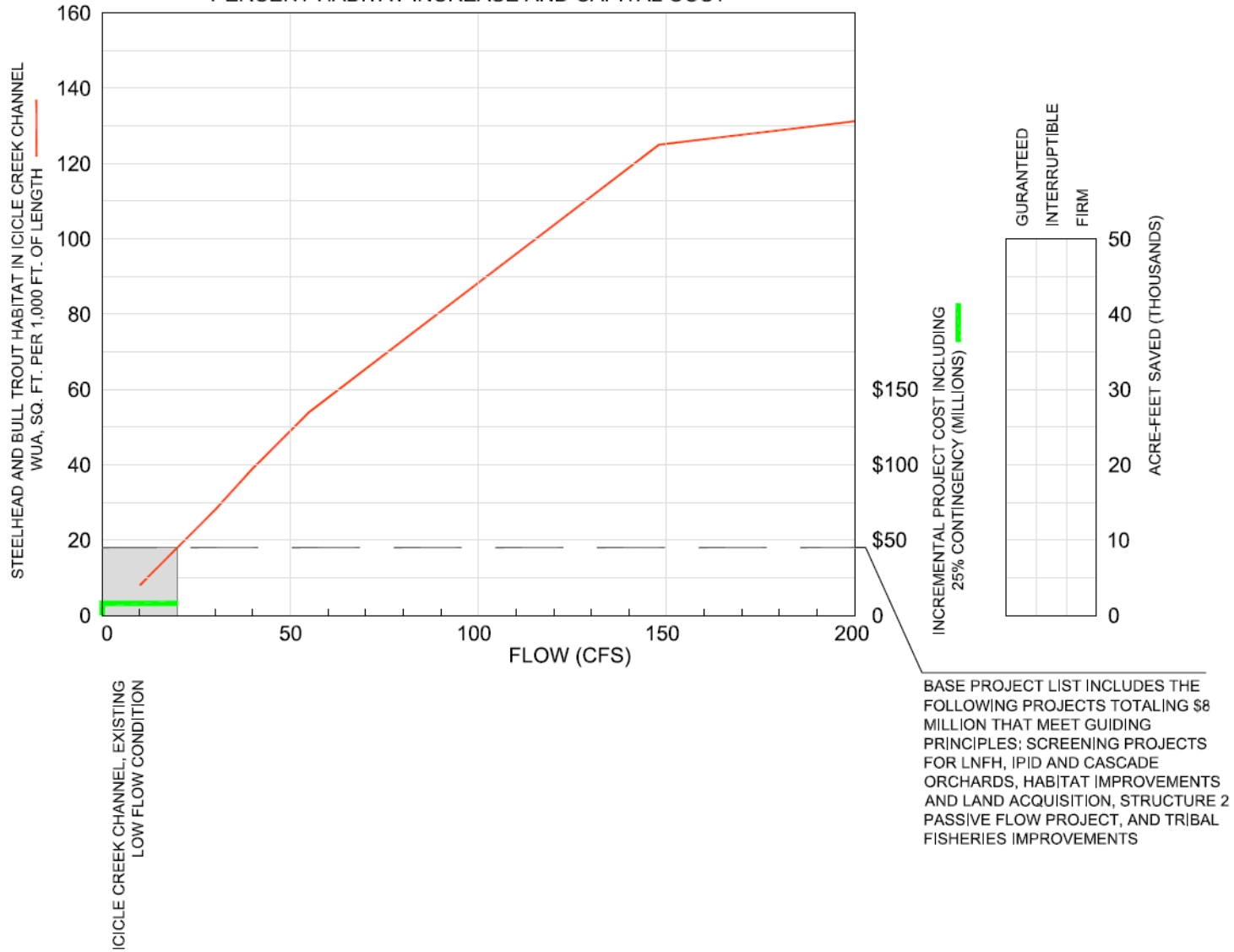


Reliability Level of Icicle Water Supply Projects

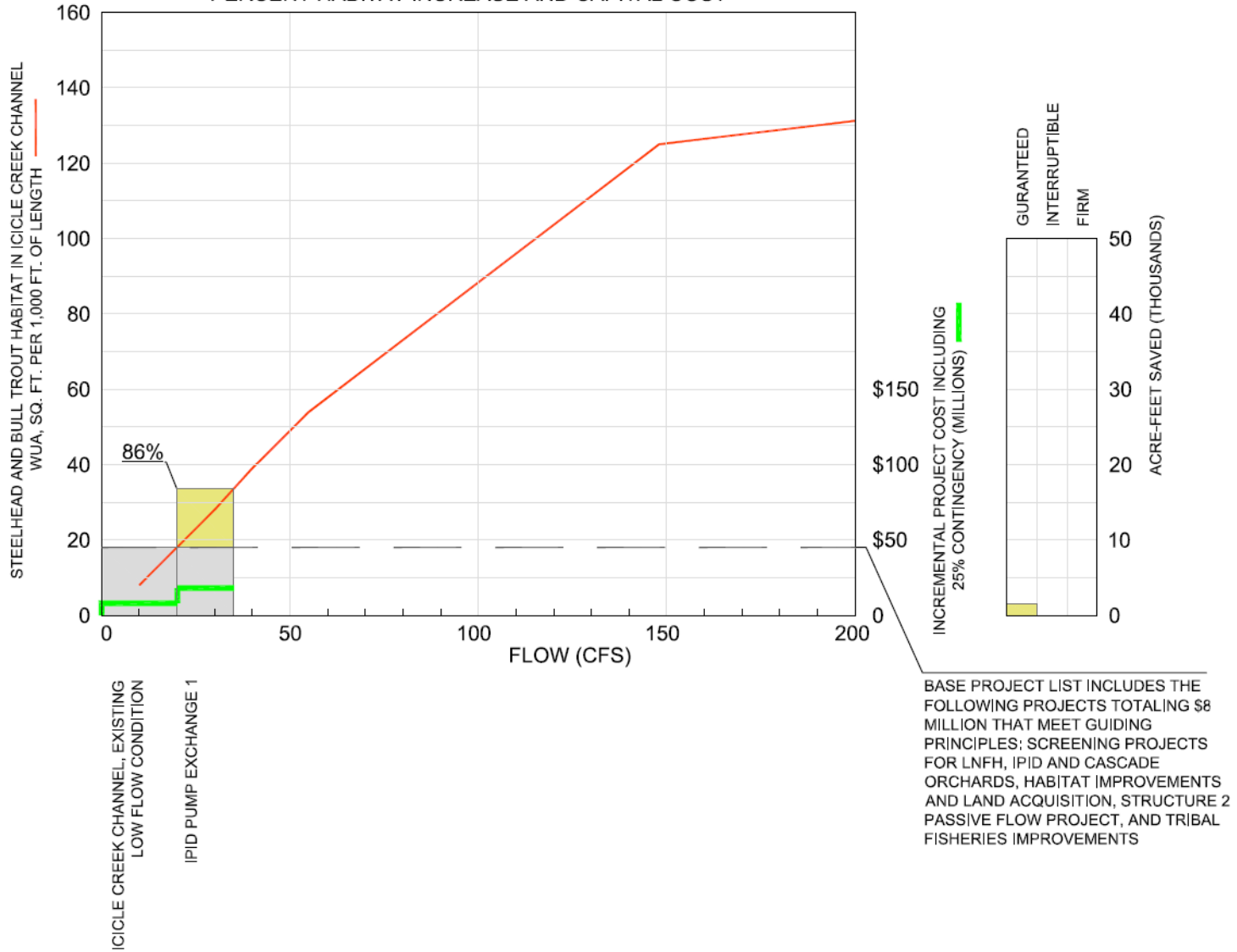
Water supply made available by proposed projects are grouped according to the following:

- *Guaranteed* - water rights are permanently placed in the State Trust Program under RCW 90.42.080
- *Firm* - water rights that are described as “non-permanent conveyances” under RCW 90.42.040
- *Interruptible* - water rights that are subject to interruption during drought years

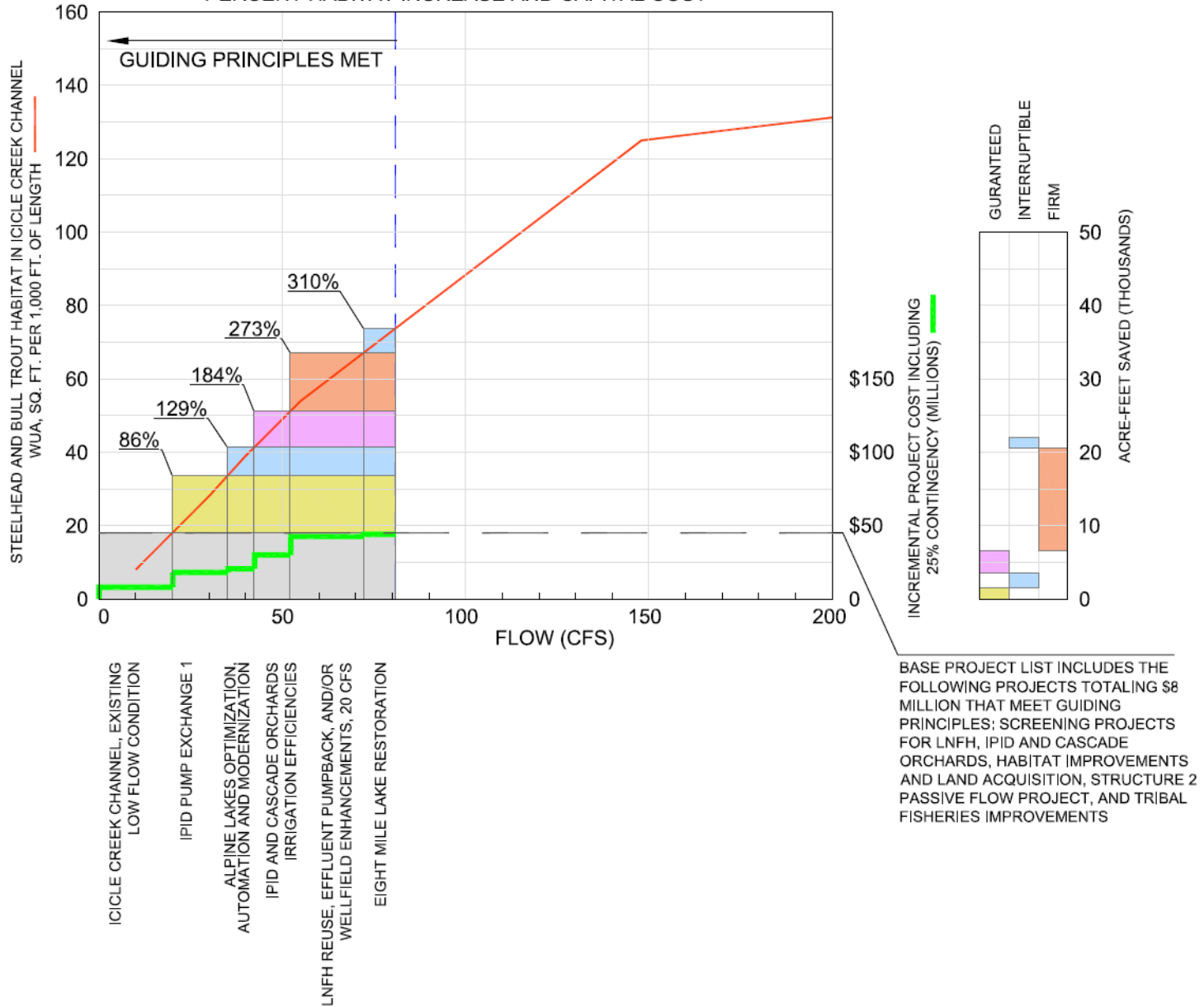
WENATCHEE 2050 INTEGRATED PROJECT LIST
 PERCENT HABITAT INCREASE AND CAPITAL COST



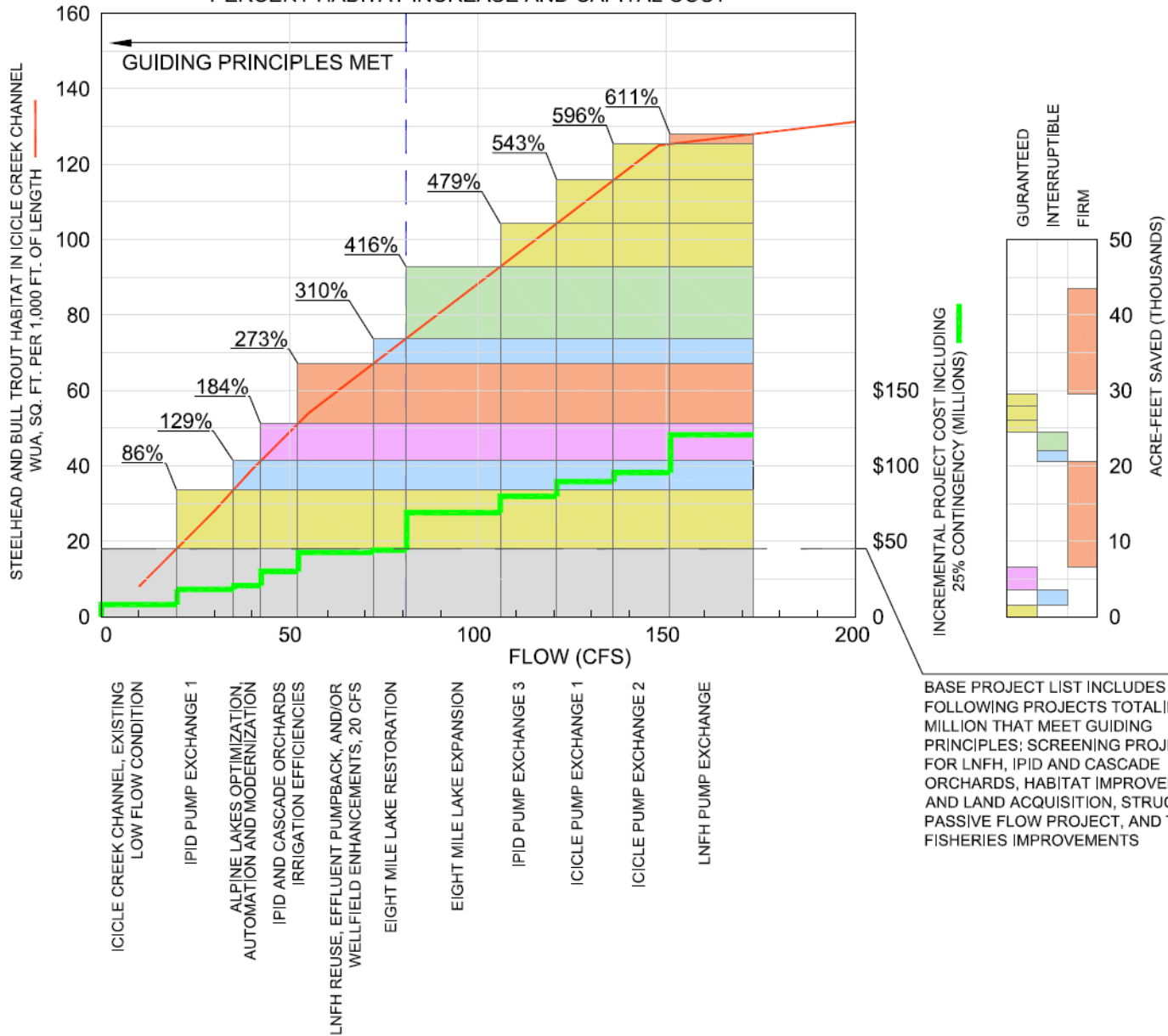
WENATCHEE 2050 INTEGRATED PROJECT LIST
 PERCENT HABITAT INCREASE AND CAPITAL COST



WENATCHEE 2050 INTEGRATED PROJECT LIST
 PERCENT HABITAT INCREASE AND CAPITAL COST



WENATCHEE 2050 INTEGRATED PROJECT LIST PERCENT HABITAT INCREASE AND CAPITAL COST



Summary of Base Package

- All guiding principles are met
- Guaranteed water = 25 cfs and 4,700 acre-feet
- Firm water = 20 cfs and 14,000 acre-feet
- Interruptible water = 23 cfs and 3,400 acre-feet
- Habitat increase in historic channel = 310%

Questions?



Dan Haller, PE

dhaller@aspectconsulting.com

509.895.5462

