

Irrigation District Efficiencies Project

DRAFT

ICICLE COMPREHENSIVE WATER RESOURCES STRATEGY

More Information Available at <http://www.ecy.wa.gov/programs/wr/cwp/>

PROJECT DESCRIPTION

Update both of the 1993 Icicle and Peshastin Irrigation Districts' Management Plans and evaluate irrigation efficiency opportunities for Icicle and Peshastin Irrigation Districts and Cascade Orchards Irrigation Company. Implement infrastructure improvements such as canal lining, piping and on-farm efficiencies.

Lead Entity to Implement: IID, PID and COIC

Estimated Project Cost:

Update Icicle and Peshastin Irrigation Districts Comprehensive Plans- \$100,000

Develop Cascade Orchards Company Comprehensive Plan- \$70,000

Implement Infrastructure and Efficiency Improvements- \$7.7 Million

PROJECT BENEFIT

Instream Flow benefits are based on preliminary estimates.

- IID presumes a 5-cfs (1,500 ac-ft) over 150 days;
- PID presumes 3.3-cfs (1,000 ac-ft)
- COIC presumes 1.6-cfs (500 ac-ft).

All benefit locations will be from RM 0.0 to 5.7 in Icicle Creek with benefits continuing down the mainstem Wenatchee River and Columbia River.

GUIDING PRINCIPLES

- Instream flow (GP #1)
- Improved Agricultural Reliability (GP #5)

POTENTIAL ISSUES/ DATA GAPS

- XXXXXXX

Timeline to Implement

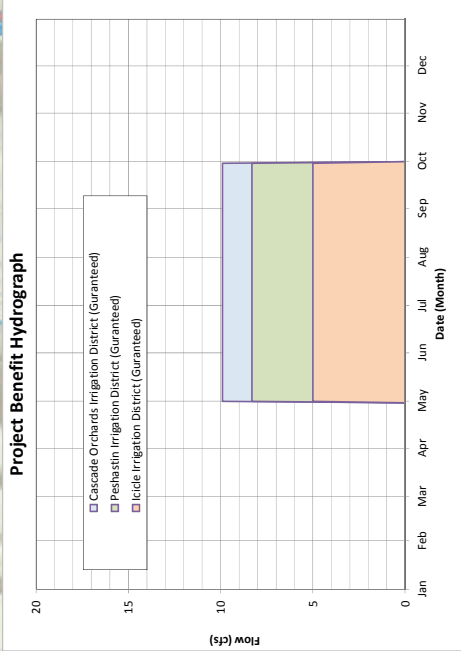
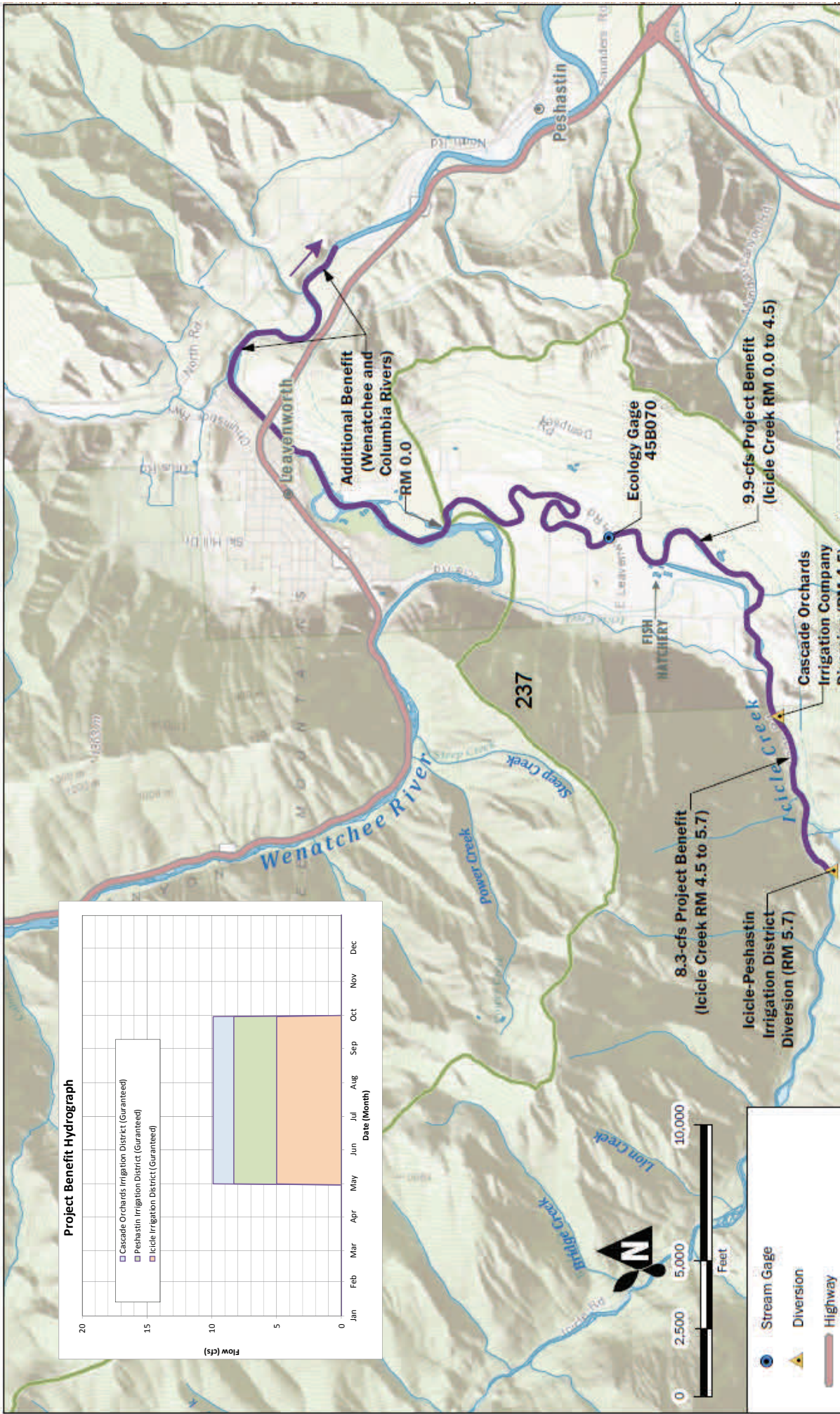
2014—Update plans and identify efficiency projects.

2015—Earliest Implementation could begin.

EXISTING and ONGOING STUDIES

- Peshastin Irrigation District Comprehensive Conservation Plan, 1993, Klohn & Leonoff
- Icicle Irrigation District Comprehensive Conservation Plan, 1993, Klohn & Leonoff
- Icicle Creek Target Flow Report of the Leavenworth National Fish Hatchery, 2004, Montgomery Water Group; Addressing Icicle Creek from RM 3.9 to RM 4.5.
- Water Storage Report – Wenatchee Watershed, 2011, Anchor QEA LLC, funded by Ecology (CCNRD Project Sponsor); Includes high level evaluations of potential irrigation improvements projects to increase instream flows.
- Lower Icicle IFIM, 2005, US Bureau of Reclamation; Basis for Wenatchee Instream Flow Rule (WAC 173-545) addressing Icicle Creek from RM 0.0 to RM 2.7.
- Instream Flow Incremental Methodology (IFIM) Study, (Ongoing), US Fish and Wildlife Service; Addressing Icicle Creek from RM 2.7 to RM 3.8.

Revision Date: September 4, 2013



Water Supply Availability:
Guaranteed - water rights are permanently placed in the State Trust Program under RCW 90.42.08
Firm - water rights that are described as "firm permanent conveyances" under RCW 90.42.040
Interruptible - water rights that are subject to interruption during drought years

- Stream Gage
- Diversion
- Highway
- Instream Flow Benefit (Guaranteed)
- Adaptive management

Irrigation Efficiencies Icicle-Peshastin and COIC

Icicle Creek Comprehensive Water Management Strategy
 WRIA 45, Washington

	AUG-2013	ENH / JRB	FIGURE NO. 2
	PROJECT NO. 120045	REV BY:	